



Energy saving and environmental protection included

Technical documentation

Comfort domestic ventilation system

CWL Excellent • CWL-F Excellent • CWL



Comfort domestic ventilation system (CWL)

General info

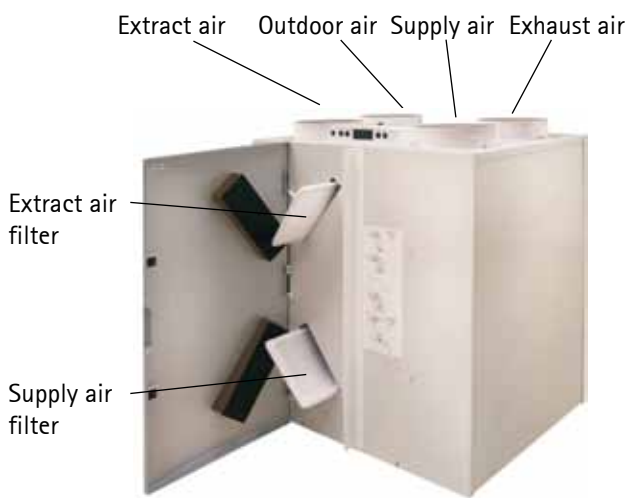
Function

Units with an air flow rate of von 50 – 400 m³/h.

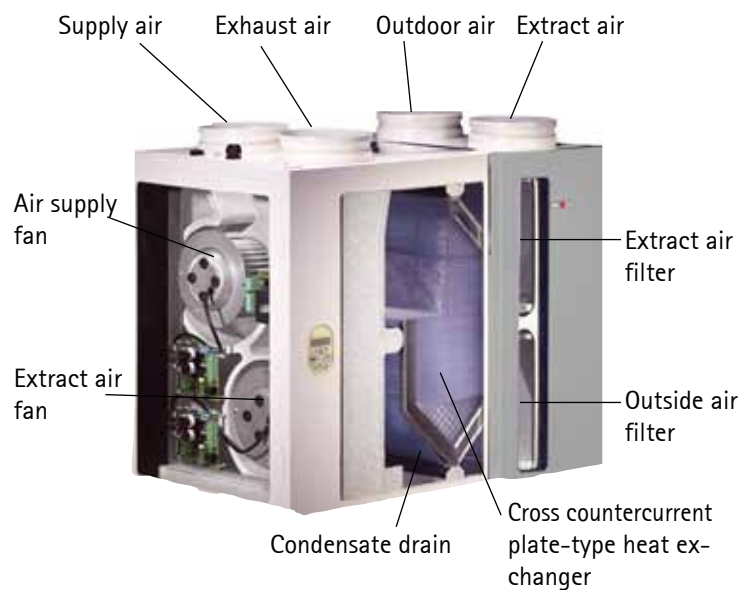
Suitable for detached houses and apartment buildings as well as offices and apartments. The Comfort domestic ventilation system CWL Excellent with heat recovery extracts stale air from the kitchen, bathroom and toilet areas. This air is routed across a cross countercurrent plate-type heat exchanger and is expelled to the outside.

At the same time, fresh outside air is drawn into the system, cleaned by an air filter, heated by the cross countercurrent heat exchanger and routed into the appropriate rooms, such as the living room, bedrooms and children's rooms.

CWL-300/400 Excellent



CWL-180/300/400



Benefits of the Wolf Comfort domestic ventilation system

- Clean, pollen-free fresh air – airing with your windows closed, excluding street noise (not only for those suffering from allergies).
- Removable cross countercurrent plate-type heat exchanger made from plastic; up to 95 % heat recovery from extracted stale air.
- One fan each for ventilation and extract air, both variable speed; low energy consumption through DC fans.
- Constant flow fans keep the air flow rate constant at the selected fan speed. This achieves a consistently high efficiency; and adjustments are limited to a minimum.
- The automatic frost stat control offers optimum protection against frost damage.
- Fully wired; filter change requirement indicated at the switch.
- Optional connections as standard available for air quality sensor, humidity sensor, electrical pre- and postheating element.

Design software



- Design software based on DIN 1946-6.
- The exceptional level of user friendliness enables competent, reliable air volume calculation in next to no time.
- In addition, the software provides a complete list of materials, a matching quotation, numerous supplementary information, and a full ventilation concept in accordance with DIN 1946-6.
- Download from www.wolf-systemprofi.de

CWL unit options

									
Type		CWL-F-150 Excellent	CWL-F-300 Excellent	CWL-180 Excellent	CWL-300 Excellent	CWL-400 Excellent	CWL-180	CWL-300	CWL-400
max. fan capacity	m³/h	150	300	180	300	400	180	300	400
Installation mode	wall mounting	✓	✓	✓	✓	✓	✓	✓	✓
	ceiling mounting	✓	✓	-	-	-	-	-	-
Operation display in unit		-	-	✓	✓	✓	✓	✓	✓
Remote control	BM-2	✓	✓	✓	✓	✓	-	-	-
	BML-Excellent	✓	✓	✓	✓	✓	-	-	-
	remote control OpenTherm	-	-	-	-	-	✓	✓	✓
	4-stage switch	✓	✓	✓	✓	✓	✓	✓	✓
	remote control	✓	✓	✓	✓	✓	✓	✓	✓
Bypass	integrated	✓	✓	-	✓	✓	-	✓	✓
	without	-	-	✓	-	-	✓	✓	✓
Electrical preheater	integrated	✓	-	-	✓	✓	-	-	-
	Accessory	-	✓	✓	-	-	-	✓	✓
Electrical postheating element	Accessory	✓	✓	✓	✓	✓	-	✓	✓
Enthalpy heat exchanger	optional	-	-	-	-	✓	-	-	-
	Accessory	-	✓	-	✓	✓	-	-	-
Air quality-, humidity- and CO ₂ -sensor	Accessory	✓	✓	✓	✓	✓	-	✓	✓
Passive house certification		✓	✓	-	✓	✓	-	-	✓
DIBt - type approval		applied	✓	-	✓	✓	-	✓	✓

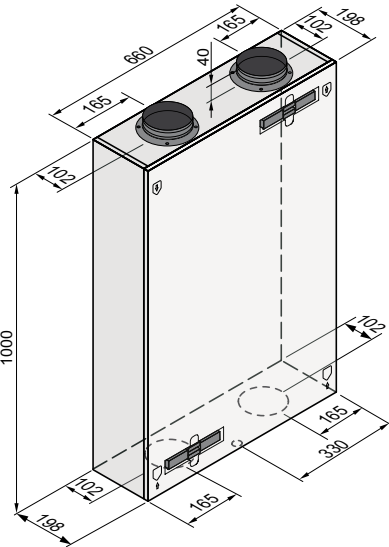
CWL-F-150/300 Excellent

Flat unit

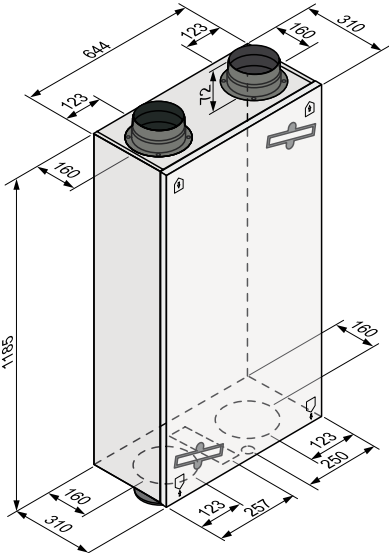


- Compact, flat design for ceiling and wall mounting
- Bypass as standard
- Filter grade G4 (optional F7)
- CWL-F-150 Excellent includes electrical preheater 375W as standard

Technical data



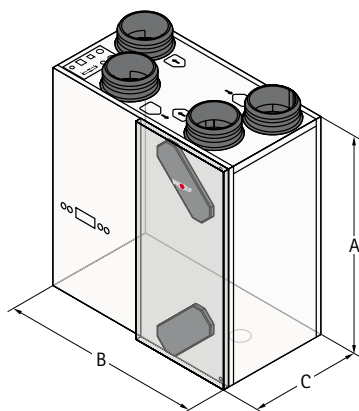
CWL-F-150 Excellent



CWL-F-300 Excellent

Comfort domestic ventilation system			CWL-F-150 Excellent	CWL-F-300 Excellent
Air flow rate at 150 Pa		m³/h	max. 150	max. 300
Heat recovery max.		%	95	95
Dimensions	Length	mm	1000	1185
	Width	mm	660	644
	Heigth	mm	198	310
Filter grade		mm	Ø125	Ø150 / 160
Power factor			G4 (optional F7)	G4 (optional F7)
Wirkfaktor	Cos φ		0,34 – 0,49	0,39 – 0,53
Power consumption	W		11 – 72 W	9 – 162 W
Power consumption at 100 Pa		W	54 W at 100 m³/h	79 W at 225 m³/h
Weight		kg	24,5	37
Protection		IP	30	30
Electricity supply			230 V / 50 Hz	230 V / 50 Hz

Technical data



Comfort domestic ventilation system			CWL-180 Excellent
Fan capacity at 150 Pa	m ³ /h		max. 180
Heat recovery rate max.	%		95
Dimensions	Length	A mm	600
	Width	B mm	560
	Height	C mm	315
Duct connections	mm		Ø125
Filter grade			G4
Power factor	Cos φ		0,56 - 0,67
Power consumption	W		16 - 132
Power consumption at 150 Pa	W		86 at 150m ³ /h
Weight	kg		25
Protection	IP		30
Electricity supply			230 V / 50 Hz

Optional connections

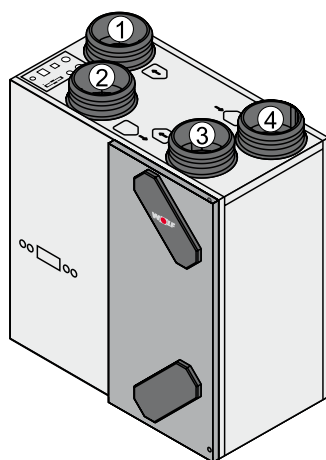
To do justice to the varied installation situations, Wolf offers these devices with two different connection options:

- Right version 4/0
- Left version 4/0

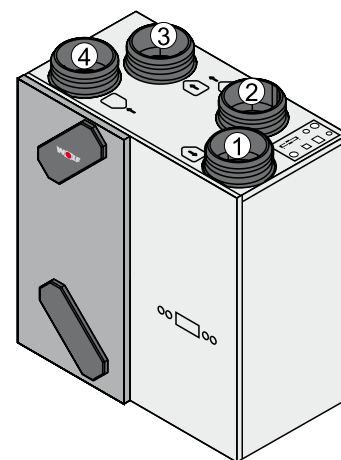
The inspection door for filter service is arranged either on the left or on the right.

The connections for ventilation air, expelled air, extract air and outside air are as shown in the diagrams.

Right version 4/0

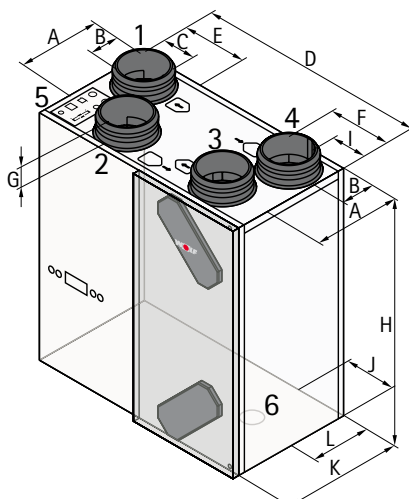


Left version 4/0



- 1 Supply air (living room)
- 2 Exhaust air (to the outside)
- 3 Extract air (living room)
- 4 Outdoor air (from the outside)
- 5 Electrical connection
- 6 Condensate connection

Dimensions

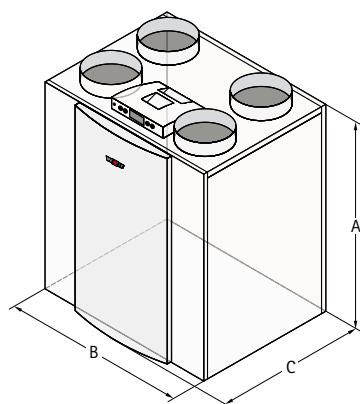


Type	A	B	C	D	E	F	G	H	I	J	K	L
CWL-180 Excellent R	213	77	79	560	168	125	45	600	75	248	290	145

CWL-300/400 Excellent

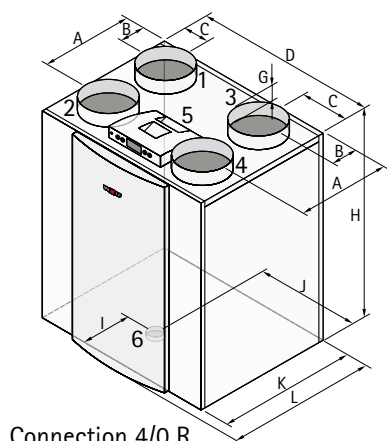
Technical data

Technical data

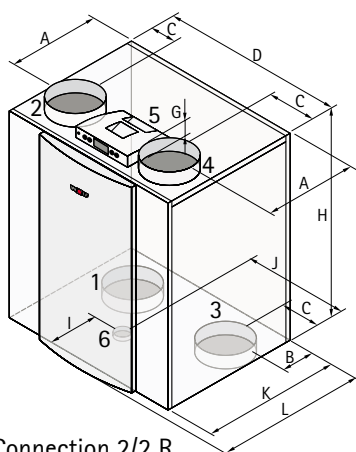


Comfort domestic ventilation system			CWL-300 Excellent	CWL-400 Excellent
Fan capacity at 150 Pa	m³/h		max. 300	max. 400
Max. heat recovery rate	%		95	95
Dimensions	Length	A mm	765	765
	Width	B mm	677	677
	Height	C mm	564	564
Duct connections	mm		Ø160	Ø180
Filter grade			G4 (F7 as accessory)	G4 (F7 as accessory)
Power factor	Cos φ		0,37 - 0,51	0,38 - 0,61
Power consumption	W		3 - 138	3 - 172
Power consumption at 150 Pa	W		66 at 225 m³/h	98 at 300m³/h
Weight	kg		38	38
Protection	IP		30	30
Electricity supply			230 V / 50 Hz	230 V / 50 Hz

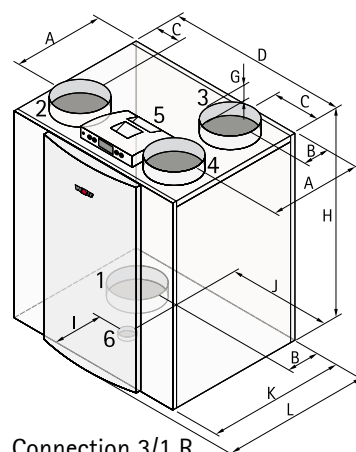
- Bypass as standard
- Includes electrical preheater 1000W as standard



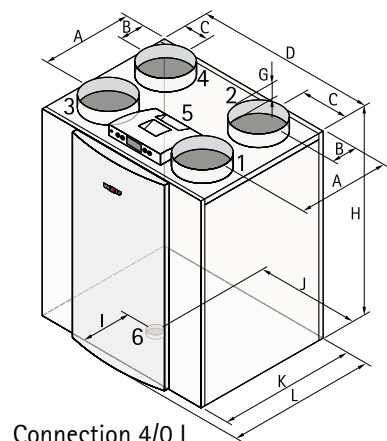
Connection 4/0 R



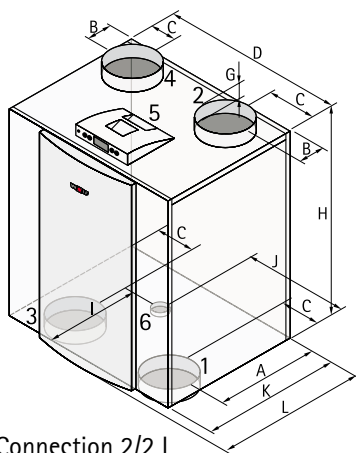
Connection 2/2 R



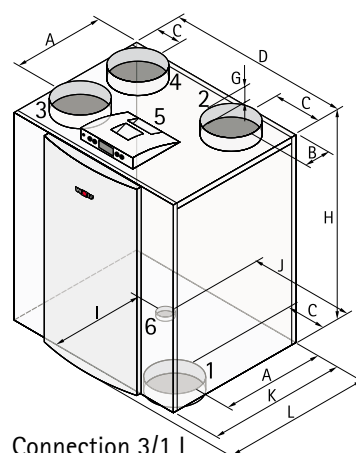
Connection 3/1 R
(only CWL-400 Excellent)



Connection 4/0 L



Connection 2/2 L



Connection 3/1 L
(only CWL-400 Excellent)

- 1 Supply air (living room) 3 Extract air (living room) 5 Electrical connection
2 Exhaust air (to the outside) 4 Outdoor air (from the outside) 6 Condensate connection

Dimensions

Type	A	B	C	D	G	H	I	J	K	L
CWL-300/400 Excellent R	388	138	138	677	45	765	198	397	526	564
CWL-300/400 Excellent L	388	138	138	677	45	765	328	280	526	564

CWL-180/300/400 Excellent Control unit-accessories

Controller

User interface



Microprocessor control unit with display for adjusting and displaying the individual control functions:

- Set value adjustment of the ventilation and extract air flow rate
- Fans ON / OFF
- Programmable pressure compensation or pressure balancing - i.e. generally over- or underpressure can be created deliberately via an adjustable value, if required, inside the accommodation
- Filter alarm on the display (filter service)
- Frost protection
- Displaying the selected values

Accessories

The following accessories can be connected directly to the unit:

- Smoke detector - this shuts down the fans in dangerous situations
- Humidity sensor - ensures automatically the extraction of a larger amount of air in case of excessive relative humidity (e.g. in the bathroom) (extraction)
- Air quality sensor - ensures that a larger amount of supply air is provided automatically in case of excessive CO2 content (e.g. in the living room) (ventilation)
- Control of a booster heater bank (1000 W) - the booster heater bank heats the ventilation air to an adjustable value

Four-stage switch



Four-stage switch with LED

This illuminates when the filters need cleaning.

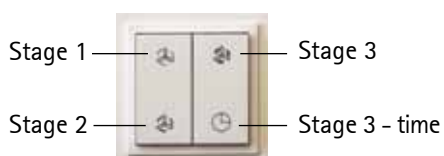
Position 1: Minimum ventilation, e.g. during absence (holiday)

Position 2: Reduced ventilation

Position 3: Basic ventilation corresponding to standard operation if the occupants are present

Position 4: Intensive ventilation, e.g. during a party, when there are visitors (high oxygen consumption)

Remote control



Wireless remote control with transmitter and receiver

Press at the top left

Fans turn at stage 1 (minimum ventilation)

Press at the bottom left

Fans turn at stage 2 (basic ventilation)

Press at the top right

Fans turn at stage 3 (intensive ventilation)

Press briefly at bottom right (< 1 s)

Fans turn at stage 3 for 15 min.; then the fans revert to stage 1

Press longer at bottom right

Fans turn at stage 3 for 30 min.; then the fans revert to stage 1

CWL-180/300/400 Excellent CWL-F-150/300 Excellent

accessories



BML Excellent ventilation programming modul with eBus interface

- Graphical Display
- Fixed time programs can be selected
- 4 ventilation stages can be set
- Frost protection
- Setting the parameters at the remote control



Extension kit for additional functions

With connection options for air quality sensor, humidity sensor and booster heater bank



Air quality sensor

Mixed gas sensor to measure the air quality;
output signal 0 - 10 V, power supply 24 V,
extension kit for additional functions required



Humidity sensor

RH sensor to measure the relative humidity;
output signal 0 - 10 V, power supply 24 V,
extension kit for additional functions required



CO₂-sensor

required for CO₂-led operation,
plug-in, as a reference value for the CO₂-based control



Electric pre-heater bank

1000 W



Electric booster heater bank

1000 W

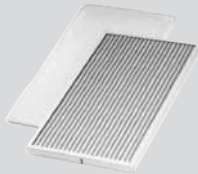
CWL-180/300/400 Excellent

CWL-F-150/300 Excellent

accessories



Service set filter G4
2 pieces



Service set filter
1x grade G4 and 1x grade F7



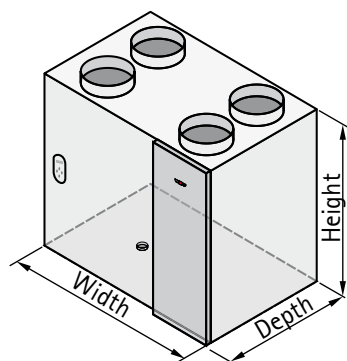
Enthalpy heat exchanger
for moisture recovery
Hygiene: AATCC - certificate (VDI 6022)
Degree of heat supply to EN 308: 78%
Humidity recovery 59%

Available for CWL-300/400 Excellent
CWL-F-300 Excellent

CWL-180 to 400

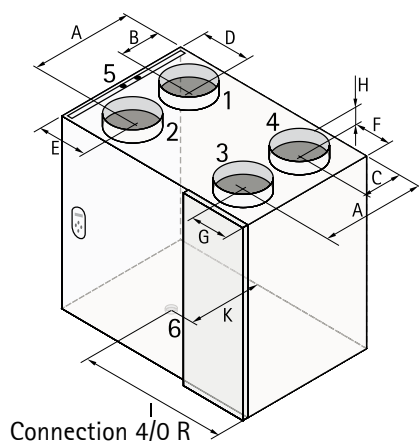
Technical data

Technical data

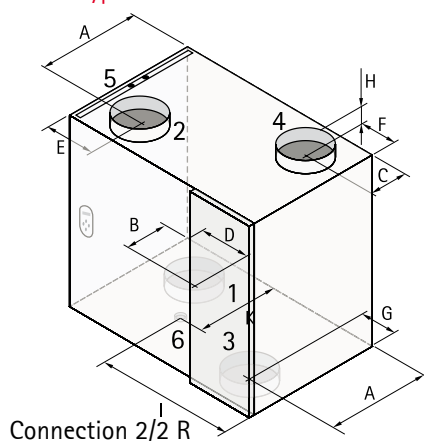


Comfort domestic ventilation system		CWL-180	CWL-300(B)	CWL-400(B)
Fan capacity at 150 Pa	m³/h	max. 180	max. 300	max. 400
Heat recovery rate max.	%	95	95	95
Dimensions	Height	mm	600	602
	Width	mm	560	675
	Depth (with bypass)	mm	315	445 (525)
Duct connections	mm	Ø125	Ø150 / Ø160	Ø150 / Ø160 / Ø180
Filter grade		G4	G4 (F6 as accessory)	G4 (F6 as accessory)
Power factor	Cos φ	0,58 - 0,67	0,60 - 0,66	0,54 - 0,62
Power consumption	W	16 - 112	16 - 174	12 - 300
Power consumption at 150 Pa (with bypass)	W	112 bei 180m³/h	174 (184) bei 300m³/h	300 (310) bei 400m³/h
Weight (with bypass)	kg	25	31 (35)	32 (36)
Protection		IP31	IP31	IP31
Electricity supply		230 V / 50 Hz	230 V / 50 Hz	230 V / 50 Hz

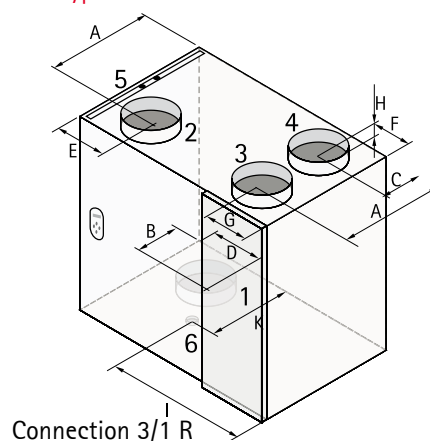
• Unit types CWL-300 B and CWL-400 B with bypass.



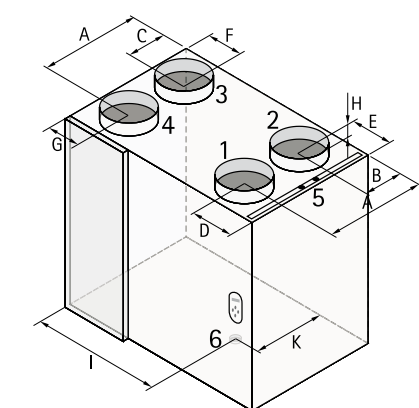
Connection 4/0 R



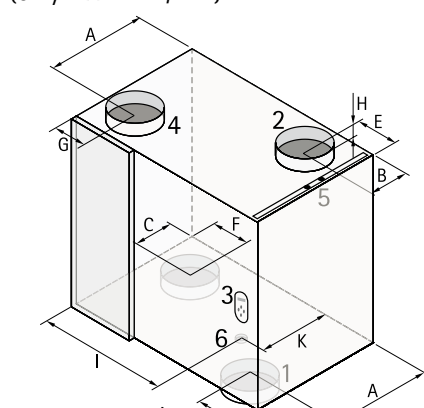
Connection 2/2 R
(only CWL-300/400)



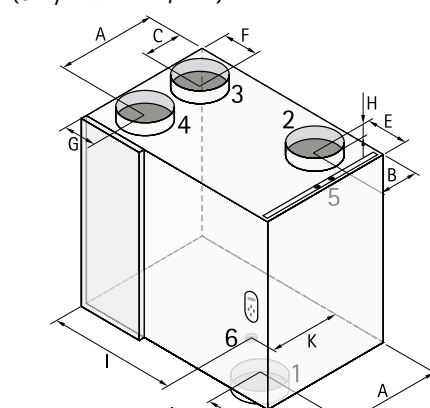
Connection 3/1 R
(only CWL-300/400)



Connection 4/0 L



Connection 2/2 L D
(only CWL-300/400)



Connection 3/1 L D
(only CWL-300/400)

Dimensions [mm]

- 1 Ventilation air (living room)
- 2 Expelled air (to the outside)
- 3 Extract air (living room))
- 4 Outside air (from the outside)
- 5 Electrical connection
- 6 Condensate connection

Type	A	B	C	D	E	F	G	H	I	K
CWL-180	213	77	77	79	168	125	75	45	248	145
CWL-300	321	99	99	165	165	89	89	45	385	220
CWL-300 4/0 R	321	121	99	165	165	89	89	45	385	220
CWL-400	336	114	114	165	165	89	89	53	385	230
CWL-400 4/0 R	336	126	114	165	165	89	89	53	385	230
CWL-400 4/0, 3/1 L	336	114	104	165	165	89	89	53	385	230

Dimensions without bypass

Controller

User interface



Microprocessor control unit with display for adjusting and displaying the individual control functions:

- Set value adjustment of the ventilation and extract air flow rate
- Fans ON / OFF
- Programmable pressure compensation or pressure balancing - i.e. generally over or underpressure can be created deliberately via an adjustable value, if required, inside the accommodation.
- Filter alarm on the display (filter service)
- Frost protection
- Control of a pre-heater bank (1000 W). The pre-heater bank is designed to maintain a ventilation air temperature above 0 °C.
- Control of a bypass damper (if installed) for models CWL-300 and CWL-400. This enables the supply of fresh outside air into the accommodation for night time cooling.
- The bypass damper opens if the room temperature exceeds an adjustable value, and the outside air temperature is below that value.
- Displaying the selected values

Accessories

Auxiliary PCB



Additional PCB with switching inputs for:

- Smoke detector - this shuts down the fans in dangerous situations
- Humidity sensor - ensures a larger amount of air is extracted automatically in case of excessive relative humidity (e.g. in the bathroom) (extraction)
- Carbon dioxide sensor - ensures a larger amount of ventilation air is supplied automatically in case of excessive CO2 content (e.g. in the living room) (ventilation)
- Control of a booster heater bank (1000 W) - the booster heater bank heats the ventilation air to an adjustable value

Four-stage switch



Four-stage switch with LED

This illuminates when the filters need cleaning.

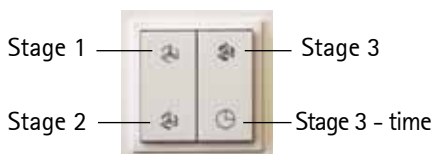
Position 1: Minimum ventilation, e.g. during absence (holiday)

Position 2: Reduced ventilation

Position 3: Basic ventilation corresponding to standard operation if the occupants are present

Position 4: Intensive ventilation, e.g. during a party, when there are visitors (high oxygen consumption)

Remote control



Wireless remote control with transmitter and receiver

Press at the top left Fans turn at stage 1 (minimum ventilation)

Press at the bottom left Fans turn at stage 2 (basic ventilation)

Press at the top right Fans turn at stage 3 (intensive ventilation)

Press briefly at bottom right (< 1 s) Fans turn at stage 3 for 15 min.; then the fans revert to stage 1

Press longer at bottom right Fans turn at stage 3 for 30 min.; then the fans revert to stage 1

CWL remote control OpenTherm



- 1 fixed time program and 1 time program that can be freely selected
- OpenTherm interface (master)
- 3 ventilation stages can be set
- Frost protection
- Setting the parameters at the remote control

Air quality sensor



Mixed gas sensor to measure the air quality; additional PCB (see above) required

Function



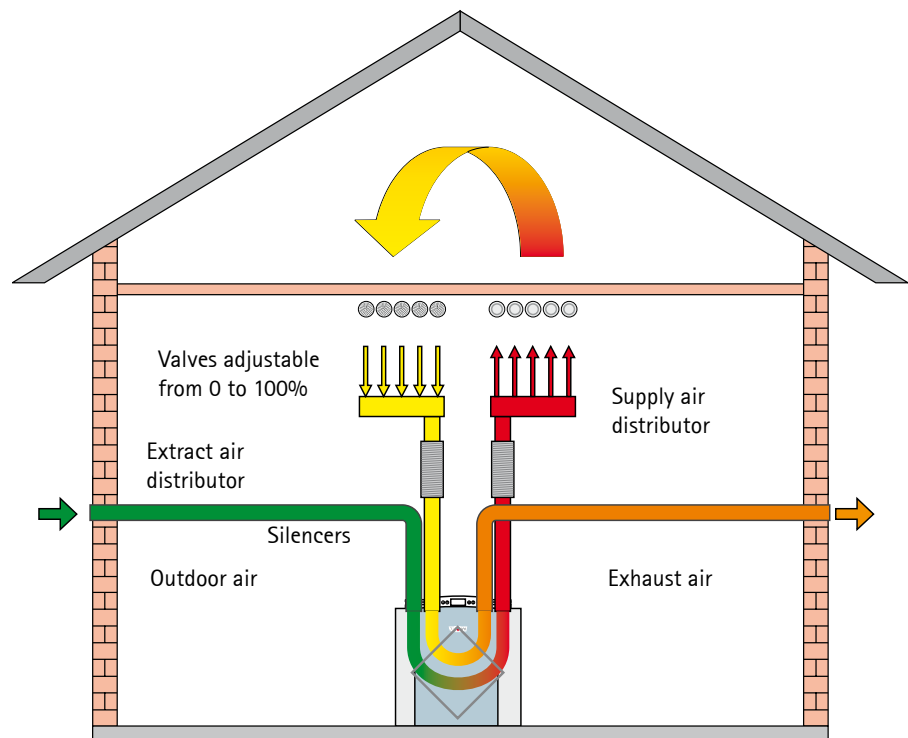
Air from the distributors to the valves routed in a hose system 75/63 or 63/52



Air routing from the distributor to the valves using flat duct system Excellent 50 x 100 or 60x130



Air for outside and expelled air and to the ventilation air and extract air distributor routed in ISO pipes DN 125/150/180.



General technical properties ISO pipe CWL

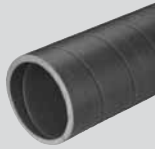
- Material density 50 kg/m³, anti-static
- Heat transfer coefficient 0.041 W/(m²K)
- Temperature range -40 °C to +60 °C
- Fire safety class B1 to DIN 4102-1 tested by the MPA Dortmund Institut
- Insulated roof outlet
- A special knife is offered for installation purposes

Characteristics

ISO pipe CWL replaces the traditional folded spiral-seam tube with insulation with a readyinsulated round pipeline DN 125, DN 150 and DN 180 made from vapour-proof EPE foam with reduced system costs. Perfectly matching pipe elements combined with insulated roof outlets for superior system benefits:

- Quick installation (savings in labour costs up to 70 % compared with folded spiral-seam tube)
- Consistent soundness of the pipework
- Consistent insulation (prevents the formation of condensate)
- Good sound insulation thanks to the relatively soft material
- Easy cleaning due to optimum smooth internal surface without edge
- Connection of profiles by means of smooth space- saving plug-in fem. connection
- Easy line inspection without dismantling through the plug-in fem. connection with tensioning toggle
- Visually and in function perfect, even after many years in use
- Wall thickness 17 mm = DN 125 and DN 150
20 mm = DN 180

Components



ISO pipe CWL

2000mm long,
DN125
DN160
DN180



ISO pipe CWL bend 90° and 45°,

DN125
DN160
DN180



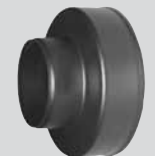
ISO pipe CWL tee,

DN125



ISO pipe CWL 45° Y-piece,

DN180



ISO pipe CWL Reducer,

DN 180/125
DN 180/150



Locking ring

for joining pipes and profiles with anti-twist protection.

DN125
DN160
DN180



Special knife

for trimming pipes to size. The special teeth facilitate a quick and clean cut.



CWL roof outlet, thermally insulated

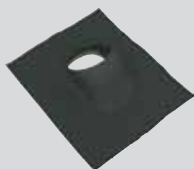
1159mm long

Color black or red DN125 and DN160

Color black DN180

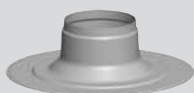


**Sealing collar
for CWL roof outlet**



CWL universal roof tile 25° to 45°

Color black or red DN125 - DN180



CWL flat roof outlet 0°

DN125 - DN180

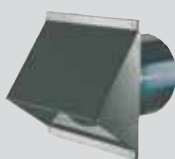


Fixing clamp for ISO pipe DN 180

DN125

DN160

DN180



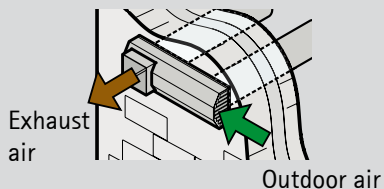
CWL wall outlet with protective grille;

Color black or white

DN125

DN160

DN180



Double grille, DN125 for outdoor and exhaust air

for CWL-F-150 Excellent and CWL-180 Excellent

Color white



Silencer, for supply or exhaust air

Length 1000mm

DN125, 50mm insulation

DN160, 50mm insulation

DN180, 50mm insulation



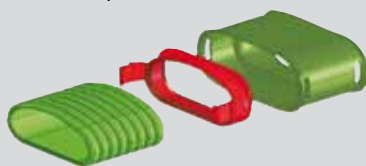
Silencer, DN125 for supply and exhaust air

insulation 482mm

Flexible hose system round



Flat duct system



Flat duct system

Pipe system specially designed for ventilation systems for flexible routing across or in false ceilings.

Twin layer construction (smooth interior, corrugated exterior) ensures:

Excellent sound insulation through low flow resistance; high annular stability yet high level of flexibility; low weight; the flat duct system Excellent assures neutral smell and anti-bacterial performance (optional) due to environmentally-friendly material (PE) and the use of hygienically ideal virgin materials. Minimum dust deposits through anti-static internal skin (optional) mark out both the flexible round hose system and the flat duct system Excellent. Hygienically perfect due to easy to clean special internal skin. Tested without measurable contaminant concentration in the air. Shorter installation times through easy processing without special tools; no waste through endless routing via click joints; direct routing on unfinished concrete, screed or in false ceilings; watertight and airtight to DIN EN 1610 through the use of seal rings at joints. With the flexible round hose system, two diameters are available (male:75/female:63 mm or male:63/female: 52 mm); the flat duct system Excellent is available in the 50 x 100 mm size.

An optimum operation can be achieved when the flow rate inside the pipe is limited to approx. 3.0 m/s (low resistance).

The ventilation air and extract air valves can be preset when the maximum pipe length (15 m in a detached house) is known and the pressure drop details from the diagram are applied. This reduces the adjustment time considerably.

The flow rate is, relative to the recommendation of approx. 3.0 m/s:

Flexible hose system round:

single hose DN 63/52 approx. $\pm 20 \text{ m}^3/\text{h}$

single hose DN 75/63 approx. $\pm 30 \text{ m}^3/\text{h}$

Flat duct system Excellent:

single duct routing 50 x 100mm up to $30 \text{ m}^3/\text{h}$

single duct routing 60 x 130mm up to $55 \text{ m}^3/\text{h}$

Routing information



Various air distributors are available for supply and extract air distribution in the building. Supply and extract air valves are integrated into the hose system via the connectors.

The ventilation air and extract air lines, air distributors and connectors for the ventilation air and extract air valves are predominantly routed and installed on/above the ceiling and under the screed. The ventilation air and extract air valves may be installed either in the ceiling or the wall.

These components may also be routed and installed in false ceilings.

Flexible hose system round



Air distribution hose

with smooth internal skin, anti-static

63/52, roll 50m

75/63, roll 50m

with smooth internal skin

63/52, roll 50m

75/63, roll 50m

Click joint for air distribution hose

anti-static and anti-bacterial

63/52

75/63

Seal ring

63/52, bag of 10 pce

75/63, bag of 10 pce

Pipe cap for

75 mm

63 mm

Air distributor, for supply and exhaust air
sound attenuating material to DIN 1946-6

DN125: 10 connectors 75/63 with 5 pipe caps for supply and exhaust air each

Air distributor, for supply or exhaust air
sound attenuating material to DIN 1946-6

DN125: 6 connectors 63/52 with 3 pipe caps for supply or exhaust air each
5 connectors 75/63 with 2 pipe caps for supply or exhaust air each

DN160: 12 connectors 63/52 with 6 pipe caps for supply or exhaust air each
10 connectors 75/63 with 5 pipe caps for supply or exhaust air each

DN180: 18 connectors 63/52 with 6 pipe caps for supply or exhaust air each
15 connectors 75/63 with 5 pipe caps for supply or exhaust air each

Connector for valve DN 125, one pipe cap and two pipe connectors

anti-static and anti-bacterial

63mm, L = 325mm

75mm, L = 325mm

Fixing ring, for round tube in conjunction with connector for valve DN 63/75mm

63/52, (bag of 10 pce)

75/63, (bag of 10 pce)

Connector for floor grille, one pipe cap and two pipe connectors

63mm, L = 350mm

75mm, L = 350mm

Flexible flat duct system



Reducer 90° from DN75 round to flat duct 50x100
anti-static and anti-bacterial

Flat duct

with smooth internal skin,
anti-static and anti-bacterial

50x100, roll 50m
60x130, roll 20m

with smooth internal skin

50x100, roll 50m
60x130, roll 20m

Fastening clips for flat duct

50x100, bag of 10 pce
60x130, bag of 10 pce

Cap for flat duct,
anti-static und anti-bacterial

50x100, bag of 10 pce
60x130, bag of 10 pce

Bend 90° CWL for flat duct
anti-static and anti-bacterial

50x100, Vertical
50x100, Horizontal
60x130, Vertical
60x130, Horizontal

Click joint for flat duct
anti-static und anti-bacterial

50x100
60x130

Seal ring for flat duct
anti-static and anti-bacterial

50x100, bag of 10 pce
60x130, bag of 10 pce

Pipe cap for flat duct
anti-static and anti-bacterial

50x100, bag of 10 pce
60x130, bag of 10 pce

Orifice plate for flat duct
anti-static and anti-bacterial

50x100, bag of 10 pce
60x130, bag of 10 pce

Flexible flat duct system



Air distributor, for supply and exhaust air
sound attenuating material to DIN 1946-6

DN125: 6 connectors 50x100 with 3 pipe caps for supply and exhaust air each

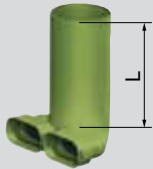


Air distributor, for supply or exhaust air
sound attenuating material to DIN 1946-6

DN125: 5 connectors 50x100 with 2 pipe caps for supply or exhaust air each

DN160: 10 connectors 50x100 with 5 pipe caps for supply or exhaust air each
4 connectors 60x130 with 2 pipe caps for supply or exhaust air each

DN180: 15 connectors 50x100 with 5 pipe caps for supply or exhaust air each
8 connectors 60x130 with 4 pipe caps for supply or exhaust air each

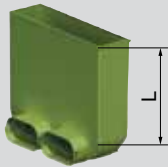


Connector for valve DN 125,
two duct connections and one pipe cap
anti-static and anti-bacterial

Length L = 240mm

50x100 – 90°

60x130 – 90°

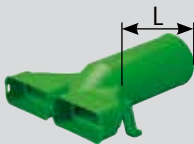


Connector for floor grille DN125,
one or two duct connections and one pipe cap
anti-static and anti-bacterial

Length L = 220mm

50x100 (two duct connections)

60x130 (one duct connection)



Connector for valve DN 125, one pipe cap
and two tube connectors 180°
anti-static and anti-bacterial

Length L = 250mm

60x130 – 180°



Floor grille, metal
white or stainless steel

Supply / extract air valves



Supply air valve plastic DN 125



Supply air valve metal DN 125



Extract air valve plastic DN 125



Extract air valve metal DN 125



Extract air valve plastic DN 125



Supply air valve inductive DN 125



Kitchen extract air valve with filter G3



Energiesparen und Klimaschutz serienmäßig

Das umfassende Gerätesortiment des Systemanbieters Wolf bietet bei Gewerbe- und Industriebau, bei Neubau sowie bei Sanierung/Modernisierung die ideale Lösung. Das Wolf Regelungsprogramm erfüllt jeden Wunsch in Bezug auf Heizkomfort. Die Produkte sind einfach zu bedienen und arbeiten energiesparend und zuverlässig. Photovoltaik- und Solaranlagen lassen sich in kürzester Zeit auch in vorhandene Anlagen integrieren. Wolf Produkte sind problemlos und schnell montiert und gewartet.

Wolf GmbH, Postfach 1380, 84048 Mainburg, Tel.: 0 87 51 / 74-0, Fax: 0 87 51 / 74-1600, Internet: www.wolf-heiztechnik.de



Die Kompetenzmarke für Energiesparsysteme

Art.Nr. 4800712

