



Supremely compact gas condensing boiler, controllable via app

Why choose the Daikin gas condensing boiler?

NEW



Connectivity/Cloud Service

Always in control, no matter where you are

Easy installation and service

All parts are accessible from the front and low maintenance thanks to gas-adaptive combustion system Lambda Gx with fully electronic gas-air combination

Solar thermal connection

Combi boiler: Solar pre-heating
Heating only boiler: solar controller input

Low weight
<30 kg



Most compact
400 x 255 x 580 mm

Flexible in use

Thanks to IPX5D standard and its compact dimensions, possible to install in nearly all room conditions, like cupboards, balcony etc.

Modulation 1:8

Capacity adapts to required heat from 3 to 24 kW

Daikin eye

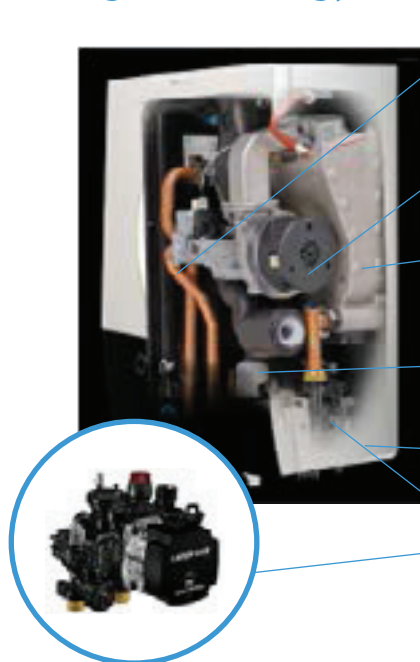
Easy to see if unit is in operation, stand by mode or if an error occurs

Daikin gas condensing technology

Supporting tools

Extranet

- > Experience our business portal at my.daikin.eu
- > Find information easily
- > Access via mobile or desktop
- > Customise the options so you see only info relevant for you



Gas Valve

- > Less maintenance needed. It requires little servicing, only a function check once a year is recommended

Fan

- > Wider modulation range
- > Low noise revolution

Heat exchanger

- > 100% Daikin design
- > High Capacity/Weight index (~7kg)

Condensate Trap

- > Daikin design

Domestic hot water plate heat exchanger

- > Increased number of plates to provide faster hot water production at high efficiency.

Pump & Return hydroblock Includes filter and flow restrictor

- > Air vent + plate heat exchanger connection + Drain tap + Internal bypass

Gas condensing boiler

Supremely compact gas condensing boiler, controllable via app

- › Very compact unit and flexible in use: possible to install in nearly all room conditions
- › Online controller (optional): control your indoor from any location with an app, via your local network or internet and keep an overview on your energy consumption
- › Easy installation and service: all parts are accessible from the front
- › Low maintenance as only a function check is recommended once a year
- › Solar thermal connection possible



Indoor Unit		D2CND/D2TND		024A0AIT/1A/4A	028A1/4A	035A1/4A	012A4A	018A4A	024A4A	028A4A	035A4A
Gas	Connection	Diameter	inch	3/4" Male Thread			3/4" Male Thread				
Gas	Gas Consumption (G20)		m ³ /h	2.48	3.01	3.77	1.23	1.85	2.48	3.01	3.77
	Gas Consumption (G25)		m ³ /h	2.89	3.42	4.28	1.44	2.15	2.89	3.42	4.28
	Gas Consumption (G31)		m ³ /h	0.96	1.15	1.44	0.48	0.71	0.96	1.15	1.44
Central heating	Nom. input rating (lower value)		kW	2.9 - 23.5	3.8 - 27.1	4.7 - 34	2.9 - 11.7	2.9 - 17.5	2.9 - 23.5	3.8 - 27.1	4.7 - 34
	Nom. input rating (upper value)		kW	3.2 - 26.1	4.2 - 30	5.2 - 37.7	3.2 - 13.0	3.2 - 19.4	3.2 - 26.1	4.2 - 30	5.2 - 37.7
	Output at 80/60°C Min - Nom		kW	2.8 - 22.8	3.6 - 26	4.46 - 32.6	2.8 - 11.4	2.8 - 17.0	2.8 - 22.8	3.6 - 26	4.46 - 32.6
	Output at 50/30°C Min - Nom		kW	3.1 - 24.0	4 - 28	5 - 35	3.1 - 12	3.1 - 18.0	3.1 - 24.0	4 - 28	5 - 35
	Min. Output at 30/40		kW	3.2	4.1	5.0	3.2	3.2	3.2	4.1	5.0
	Efficiency		%	108.7%	108.0%	108%	108.7%	108.7%	108.7%	108%	108%
	Max. CH water pressure		bar	3			3				
	Max. CH water temperature		°C	80			80				
Domestic hot water	Nom. input rating (lower value)		kW	2.9 - 23.5	3.8 - 27.1	4.7 - 34	2.9 - 11.7	2.9 - 17.5	2.9 - 23.5	3.8 - 27.1	4.7 - 34
	Nom. input rating (upper value)		kW	3.2 - 26.1	4.2 - 30	5.2 - 37.7	3.2 - 13.0	3.2 - 19.4	3.2 - 26.1	4.2 - 30	5.2 - 37.7
	Nom. output		kW	2.8 - 22.8	3.6 - 26	4.46 - 32.6	2.8 - 11.4	2.8 - 17.0	2.8 - 22.8	3.6 - 26	4.46 - 32.6
	Domestic hot water threshold		l/min	2	2.0	2.0	N/A	N/A	N/A	N/A	N/A
	DHW Flow Rate at deltaT 30 K		l/min	10	12	14	N/A	N/A	N/A	N/A	N/A
	DHW temperature (factory setting)		°C	60			60				
Flue gas connection / combustion air connection	Concentric connection		mm	60/100			60/100				
Casing	Colour			Titanium white (RAL 9003) / Light grey (RAL effect 860-1)			Titanium white (RAL 9003) / Light grey (RAL effect 860-1)				
	Material			electrostatic powder coated sheet metal			electrostatic powder coated sheet metal				
Dimensions	Unit	HeightxWidthxDepth	mm	590x400x256			590x400x256				
Weight	Unit		kg	27.5	36		27.5			36	
Power supply	Name/Phase/Frequency/Voltage		Hz/V	1~/230/50			1~/230/50				
Electrical power consumption	Max.		W	87			87				
	Standby		W	3.5			3.5				

*Note: blue cells contain preliminary data